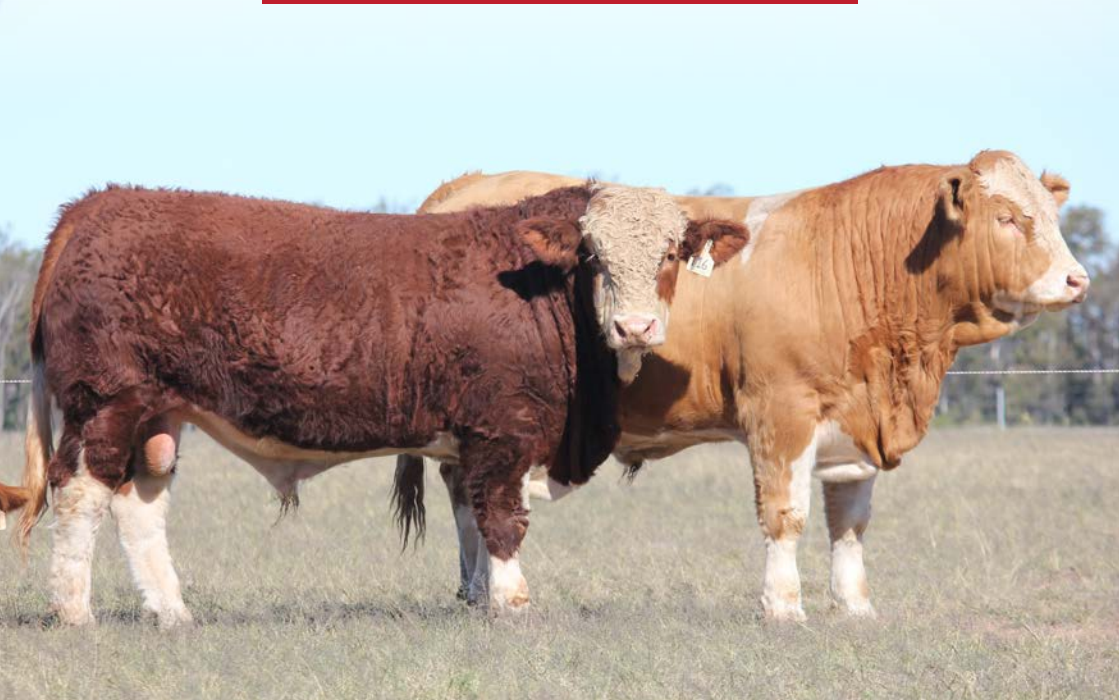




# ROMA BULL SALE



**FRIDAY 8 SEPTEMBER 2023**  
**11.00AM**  
**ROMA SALEYARDS**



*Traditional, Black and Red Simmentals*

[www.casatoro.com.au](http://www.casatoro.com.au)

## HOW TO REGISTER with

# ELITE LIVESTOCK AUCTIONS



Simply go to [www.elitelivestockauctions.com.au](http://www.elitelivestockauctions.com.au) using your desktop, laptop, iPad, iPhone or android device.



Click on the "Sign Up" page / link



Create a bidding profile using the bidder registration page. *(You can either register as a livestock agent, company or private buyer)*



Agree to the Elite Livestock Auctions Terms & Conditions and the Selling Agents Sale Terms & Conditions as printed in the official Sale Catalogue



Click "Register"



You will then be notified by email that an account has been created.



Once an account has been created you are all "Set to Bid"



Each Auction can then be viewed by clicking "Live Auction" logo on the Elite Livestock Auctions website.



Once you receive email notification that your account has been created please go to the sale you wish to bid at and click "Request to Bid"



The sale will then approve your application to bid and on the sale catalogue you will see "✓Bid Request Approved"



On Sale day simply login, click "Enter Auction" on the catalogue page and you can start bidding. *(There is no need for software download)*



At the completion of the auction, invoicing will be carried out as per your registration details by the Selling Agents.

Having trouble registering and logging in?

**1300 259 742**



Elite Livestock Auctions ABN 19604 627 607  
Level 19, 123 Eagle Street, Brisbane, QLD 4000

P : 1300 259 742 F : 07 3041 5053  
[www.elitelivestockauctions.com.au](http://www.elitelivestockauctions.com.au)



## ROMA BULL SALE

FRIDAY 8 SEPTEMBER 2023

11.00AM

ROMA SALEYARDS

INSPECTION FROM 2.00PM THURSDAY

## 50 BULLS

### CASA TORO

Scott and Claire York

70 Jackson – Wandoan Road  
JACKSON QLD 4426  
Ph: 0427 274 410, 0427 154 336  
Email: [scyork@bigpond.com](mailto:scyork@bigpond.com)

[www.casatoro.com.au](http://www.casatoro.com.au)



Andrew Meara  
0427 210 634



This sale will be simulcast  
via Elite Livestock Auctions



Mark Dutchie  
0448 016 950

2% OUTSIDE AGENTS REBATE



We are here for the long haul and not the quick dollar.



# WELCOME

Welcome to our fourth Annual Sale and what a blur the previous twelve months have been. We sincerely thank everyone that supported our 2022 record-breaking sale, even in adverse conditions. It's hard to believe that 20 – 40mm caused so many issues to our supporters in participating in our sale.

Moving along to now we're seeing a real mixed bag of seasons. Like many, we had no summer rain growing very little grass and with the loss of our agistment paddocks, we are starting to feel the pinch feed-wise in the paddocks. However, we have been very fortunate that the cropping part of our business is looking promising. Full profiles and some handy autumn and winter rains have our crops looking well and hopefully yields are above average.

2023 sees a small increase in our sale numbers as our rebuilding phase continues to gain momentum but in doing this, we are conscious that we need to still improve quality,

so rest assured we need to keep relevance to the Commercial Industry. We are here for the long haul and not the quick dollar. With a lifetime of experience with the Simmental breed I have seen the stud fads come and go but they always come back to the simple three:

- 1. Survivability** – They can look as pretty as you like in a show ring with their head in a feeder but if they can't convert grass to growth and fat, travel the paddocks to find it, and then reproduce, they are of little use to many of us.
- 2. Weight** – We are still paid on the whole with c/kg. The heavier they are at a younger age means more dollars in your pocket.
- 3. Relevance** – We need to produce an article the consumer wants to buy. No matter how good we think they are, without a buyer; our business doesn't get supported.

2023 also sees some new genetic lines in our herd. Clay Gully Panasonic was purchased in 2020 and is a Glen Anthony Y-Arta son who's added fat cover, and the docility of his calves are second to none. We also ran a small A.I program in 2020 and some resulting progeny of this are in the sale.

But it is still our homebred Sires that are leading the way. Billa Park Notetaker again has a quality lineup. After his progeny averaged almost \$24,000 in last year's sale, we are sure they we be hotly contested again this year, and our new homebred sire Casa Toro Q036 (aka "Baby Bull" as we used him at 13 months) has a small but extremely high-quality draft in the yearling bull section. In the black section, the first calves by Lavarta Phenomenon are quite impressive and it's the first time I can honestly say as a draft our black bulls match the quality of the traditional bulls. We are eagerly waiting to see where his daughters are going to take Black Program.

Again, all bulls will be Vet checked and Semen Tested by Ced Wise AB and Muscle and Fat scanned by David Reid to ensure suitability into your herd. We know these bulls like no other. We bred and fed them can tell you all you need to know about them. We are proud of the fact of our hands-on approach to the development of our breeding program.

We once again invite you to join us on 8 September 2023 at the Roma Saleyards or online via the Elite Livestock Auctions website.

**Scott, Claire, Tom and Zoe York**

# SALE INFORMATION

## LOCATION

Roma Saleyards  
44589 Warrego Highway, Roma QLD 4455

## ONLINE BIDDING

Online bidding will be available through the Elite Livestock Auctions platform. Please register at least 48hrs before the sale to ensure you can participate and familiarise yourself with the functions and procedures involved.

Visit [www.elitelivestockauctions.com.au](http://www.elitelivestockauctions.com.au) to register.

## PHONE BIDDING

The Roma Saleyards are in a good 5G service area and phone bidding is available. Please either contact Scott and Claire York on 0427 274 410 or your preferred agent Mark Duthie (GDL) 0448016950 or Andrew Meara (Elders) 0427 210 634.

## OUTSIDE AGENT REBATE

A 2% outside agent's rebate is available to agent introduction buyers in writing 24hrs prior to the sales and settling on their behalf within 7 days. Outside of these terms all rebates will be at the discretion of the vendor.

## REGISTRATION STATUS

We have both Registered and Unregistered bulls on offer. Please make yourself aware of individual lots status to suit your individual needs. Lately we have used numerous Grade registered bull as part of our program and stud breeders need to be aware of the implication of using such bulls. All bulls (unless otherwise stated) are purebred by content but not by paperwork. If you have questions, please don't hesitate to contact us.

## TEMPERAMENT

As you will see we have added a Temperament Score to our catalogue this year. This is a score from 1 to 5 with 1 being Docile and 5 being Aggressive. These are scored by us on our personal knowledge of each animal. We encourage potential purchases to assess each animal for their suitability in their own programs.

## DNA TESTING

Many Lots have been DNA tested with results available via our Supplementary Sheet available approximately one week prior to the Sale.

## VIDEO

All lots will be videoed prior to the sale. They will be available via the Casa Toro YouTube channel or Elite Livestock Auctions.

## ACCOMMODATION

There are many accommodation options in Roma and surrounds. Vendors are more than happy to help make these arrangements if you so wish. Please be advised that Roma is a major hub for the gas and oil sectors, and rooms can sometimes be hard to secure at short notice. We advise booking 4 – 6 weeks in advance.

## VACCINATIONS

All bulls have been vaccinated for 3- Germ Tick Fever, 3 Day, 5-in-1, and Vibro unless otherwise stated.

## SALE PREPARATIONS

This years draft have been prepared on a silage based ration.

## PERFORMANCE RECORDING

Simmental Australia has recently change Performance Recording systems to IGS based in the USA. The new format is displayed as an EPD (Estimated Progeny Difference) compared to the Breedplan model which is EBV's ( Estimated Breeding Values).

Here at Casa Toro we are continuing to record in both system to run a side by side evaluation to see which systems suits our needs. Because of the change our numbers in both systems are on very low accuracy at present and should be considered a guess at best. We will be displaying the EPD numbers with the sale lots and a Table of EBV's in the front of the Catalogue on those bulls that have Data recorded in the systems.

Please see opposite page for EPD explanation.

## DISCLAIMER

The vendors, sale staff and representatives accept no liability for accidents that may occur. Any person entering the premises does so at their own risk. The preparation of this catalogue is done with all due care and attention, but vendors accept no responsibility for errors in the catalogue.

## GST

The sale price excludes GST.

# EPD INFORMATION

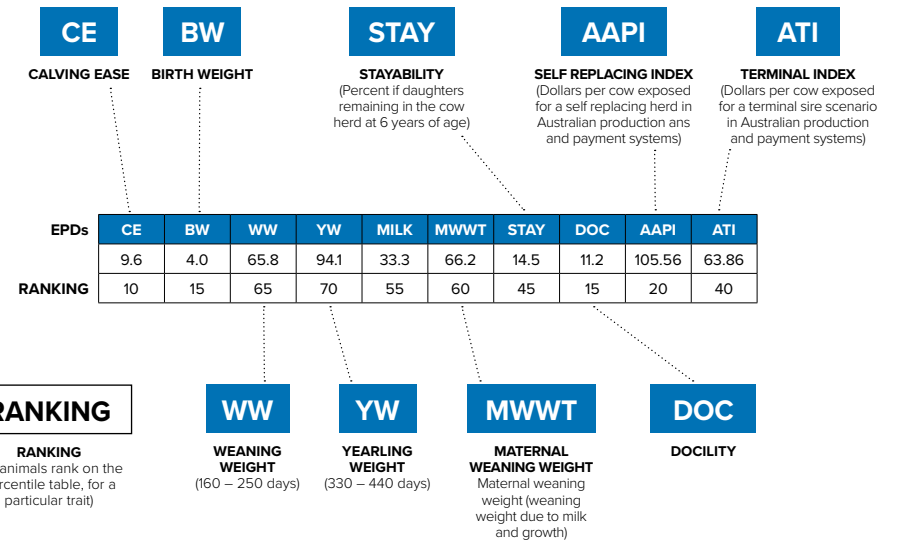
With the introduction of the IGS performance recording system for Simmental cattle, IGS is the world's largest animal performance recording system.

One of the major changes is the breeding figures being reported as Estimate Progeny Differences (EPDs), rather than Estimated Breeding Values (EBVs). The difference between the two is simple.

Effectively, an EBV is an animal's own genetic value for a particular trait. However, the animal can only pass half of this onto

their progeny. EPDs have the "half" already accounted for. That is, an EPD is the genetic merit of an animal's progeny – what they will pass onto their progeny.

IGS can incorporate an animal's genomics into its performance data. All animals in the Simmental Opportunity sale have been 100K GGP-LD DNA profiled.



## SIMMENTAL – TRADITIONAL, FULLBLOOD AND SIMBRAH REGISTER BREED AVERAGE

	CED	BW	WW	YW	MILK	MCE	MWWT	STAY	DOC	CW	REA	FAT	MARB	YG	AAPI	ATI	API	TI
EPD	5.3	5.7	69.6	101.1	33.2	3.7	68.0	13.4	8.3	20.8	0.79	-0.122	-0.09	-0.51	42.84	36.15	95.75	62.70

## BLACK, RED, SIMANGUS AND SPR REGISTER BREED AVERAGE

	CED	BW	WW	YW	MILK	MCE	MWWT	STAY	DOC	CW	REA	FAT	MARB	YG	AAPI	ATI	API	TI
EPD	10.0	2.4	76.5	116.0	23.1	5.5	61.3	15.1	12.1	29.1	0.83	-0.088	0.07	-0.40	61.14	56.46	122.61	74.27

# EBV INFORMATION

All EBVs in this catalogue are taken from the July 2022 Simmental Trans Tasman Group Breedplan run.

**An animal's breeding value is its genetic merit, half of which will be passed on to its progeny. While we will never know the exact breeding value, for performance traits it is possible to make good estimates. These estimates are called Estimated Breeding Values (EBVs).**



In the calculation of EBVs, the performance of individual animals within a contemporary group is directly compared to the average of other animals in that group. A contemporary group consists of animals of the same sex and age class within a herd, run under the same management conditions and treated equally. Indirect comparisons are made between animals reared in different contemporary groups, through the use of pedigree links between the groups.

EBVs are expressed in the units of measurement for each particular trait. They are shown as +ive or -ive differences between an individual animal's genetics difference and the genetic base to which the animal is compared.

For example, a bull with an EBV of +50 kg for 600-Day Weight is estimated to have genetic merit 50 kg above the breed base of 0 kg. Since the breed base is set to an historical benchmark, the average EBVs of animals in each year drop has changed over time as a result of genetic progress within the breed.

The absolute value of any EBV is not critical, but rather the differences in EBVs between animals. Particular animals should be viewed as being "above or below breed average" for a particular trait.

Whilst EBVs provide the best basis for the comparison of the genetic merit of animals reared in different environments and management conditions, they can only be used to compare animals analysed within the same analysis. Consequently, Simmental GROUP BREEDPLAN EBVs cannot be validly compared with EBVs from any other BREEDPLAN analysis.

EBVs are published for a range of traits covering fertility, calving ease, milking ability, growth, and carcass merit. When using EBVs to assist in selection decisions it is important to achieve a balance between the different groups of traits and to place emphasis on those traits that are important to the particular herd, markets and environment. One of the advantages of having a comprehensive range of EBVs is that it is possible to avoid extremes in particular traits and select for animals with balanced overall performance.

**CALVING EASE EBVS (%)** are based on calving difficulty scores, birth weights and gestation length information. More positive EBVs are favourable and indicate easier calving.

– **CE % Dir = Direct Calving Ease** The EBV for direct calving ease indicates the influence of the sire on calving ease in purebred females calving at two years of age.

– **CE % Daughters = Daughters' Calving Ease** The EBV for daughters' calving ease indicates how easily that sire's daughters will calve at two years of age.

**GESTATION LENGTH EBV (DAYS)** is an estimate of the time from conception to the birth of the calf and is based on Artificial Insemination and hand mating records. Lower (negative) Gestation Length EBVs indicate shorter gestation length and therefore easier calving and increased growth after birth.

**BIRTH WEIGHT EBV (KG)** is based on the measured birth weight of progeny, adjusted for dam age. The lower the value the lighter the calf at birth and the lower the likelihood of a difficult birth. This is particularly important when selecting sires for use over heifers.

**200-DAY GROWTH EBV (KG)** is calculated from the weight of progeny taken between 80 and 300 days of age. Values are adjusted to 200 days and for age of dam. This EBV is the best single estimate of an animal's genetic merit for growth to early ages.

**400-DAY WEIGHT EBV (KG)** is calculated from the weight of progeny taken between 301 and 500 days of age, adjusted to 400 days and for age of dam. This EBV is the best single estimate of an animal's genetic merit for yearling weight.

**600-DAY WEIGHT EBV (KG)** is calculated from the weight of progeny taken between 501 and 900 days of age, adjusted to 600 days and for age of dam. This EBV is the best single estimate of an animal's genetic merit for growth beyond yearling age.

**MATURE COW WEIGHT EBV (KG)** is based on the cow weight when the calf is weighed for weaning, adjusted to 5 years of age. This EBV is an estimate of the genetic difference in cow weight at 5 years of age and is an indicator of growth at later ages and potential feed maintenance requirements of the females in the breeding herd. Steer breeders wishing to grow animals out to a larger weight may also use the Mature Cow Weight EBV.

**MILK EBV (KG)** is an estimate of an animal's milking ability. For sires, this EBV indicates the effect of the daughter's milking ability, inherited from the sire, on the 200-day weights of her calves. For dams, it indicates her milking ability.

**SCROTAL SIZE EBV (CM)** is calculated from the circumference of the scrotum taken between 300 and 700 days of age and adjusted to 400 days of age. This EBV is an estimate of an animal's genetic merit for scrotal size. There is also a small negative correlation with age of puberty in female progeny and therefore selection for increased scrotal size will result in reduced age at calving of female progeny.

**DAYS TO CALVING EBV (DAYS)** indicates the fertility of the daughters of the sire. It is the time interval between the day when the female is first exposed to a bull in a paddock mating to the day when she subsequently calves. A negative EBV for days to calving indicates a shorter interval from bull-in date to calving and therefore higher fertility.

**CARCASS WEIGHT EBV (KG)** is based on abattoir carcass records and is an indicator of the genetic differences in carcass weight at the standard age of 650 days.

**EYE MUSCLE AREA EBV (SQ CM)** is calculated from measurements from live animal ultrasound scans and from abattoir carcass data, adjusted to a standard 300 kg carcass. This EBV estimates genetic differences in eye muscle area at the 12/13th rib site of a 300 kg dressed carcass. More positive EBVs indicate better muscling on animals. Sires with relatively higher Eye Muscle Area EBVs are expected to produce better muscled and higher percentage yielding progeny at the same carcass weight than will sires with lower Eye Muscle Area EBVs.

**RIB FAT AND RUMP FAT EBVS (MM)** are calculated from measurements of subcutaneous fat depth at the 12/13 rib site and the P8 rump site (from live animal ultrasound scans and from abattoir carcasses) and are adjusted to a standard 300 kg carcass. These EBVs are indicators of the genetic differences in fat distribution on a standard 300 kg carcass. Sires with low, or negative, fat EBVs are expected to produce leaner progeny at any particular carcass weight than will sires with higher EBVs.

**RETAIL BEEF YIELD EBV (%)** indicates genetic differences between animals for retail yield percentage in a standard 300 kg carcass. Sires with larger EBVs are expected to produce progeny with higher yielding carcasses.

**INTRAMUSCULAR FAT EBV (%)** is an estimate of the genetic difference in the percentage of intramuscular fat (marbling) at the 12/13th rib site in a 300 kg carcass. Depending on market targets, larger more positive values are generally more favourable.

**SELECTION INDEXES** Simmental selection indexes are calculated for four market specifications, namely, Domestic Maternal, Export Maternal, Northern Terminal and Vealer Terminal. These Indexes relate to typical Simmental herds in temperate Australia targeting these specifications.

Indexes are reported as an EBV, in units of relative earning capacity (\$) for a given market. They reflect both the short-term profit generated by a sire through the sale of his progeny, and the longer-term profit generated by his daughters in a self-replacing cow herd. Note that different types of animals can give similar profit values, so consideration should be given to both the index and the component EBVs when selecting animals for a particular production system. The Indexes are derived using the BreedObject technology.

**DOMESTIC MATERNAL INDEX** – Estimates the genetic differences between animals in net profitability per cow joined for an example commercial herd in Southern Australia (e.g. Angus cows) targeting the domestic supermarket trade. Steers are either finished on grass or grain (e.g. 60-70 days). Steers are marketed at 430 kg live weight (240 kg HSCW and 6 mm P8 fat depth) at 14 months of age. Daughters are retained for breeding.

**EXPORT MATERNAL INDEX** – Estimates the genetic differences between animals in net profitability per cow joined for an example commercial herd in Northern Australia (e.g. Angus cows) targeting the export trade. Steers are finished on grain (e.g. 120 days) and marketed at 700 kg live weight (380 kg HSCW and 8 mm P8 fat depth) at 28 months of age. Daughters are retained for breeding.

**NORTHERN TERMINAL INDEX** – Estimates the genetic differences between animals in net profitability per cow joined for an example commercial herd in Northern Australia (e.g. Brahman cows) targeting the export trade. Steers are finished on grass and marketed at 630 kg live weight (345 kg HSCW and 12 mm P8 fat depth) at 28 months of age. This is a terminal production system therefore no daughters are retained for breeding.

**VEALER TERMINAL INDEX** – Estimates the genetic differences between animals in net profitability per cow joined for an example commercial herd in Southern Australia (e.g. Angus cows) targeting the vealer trade. Vealers are weaned and sold at 8 months of age weighing 350 kg (195 kg HSCW and 6mm P8 fat depth). This is a terminal production system therefore heifers are not retained for breeding purposes.

Note that \$Index Values for individual animals are sensitive to the assumptions used in the BreedObject analysis to calculate the relevant selection index.

**ACCURACY (%)** is based on the amount of performance information available on the animal and its close relatives - particularly the number of progeny analysed. Accuracy is also based on the heritability of the trait and the genetic correlations with other recorded traits. Hence accuracy indicates the "confidence level" of the EBV. The higher the accuracy value the lower the likelihood of change in the animal's EBV as more information is analysed for that animal or its relatives. Even though an EBV with a low accuracy may change in the future, it is still the best estimate of an animal's genetic merit for that trait. As more information becomes available, an EBV is just as likely to increase in value, as it is to decrease. As a rule, animals should be compared on EBVs regardless of accuracy. However, where two animals have similar EBVs the one with higher accuracy could be the safer choice, assuming other factors are equal.

### Mid June 2023 SIMMENTAL BREEDPLAN – Percentile Bands for all 2021 born animals

Use this table as a guide to compare individual animals with the current genetic level of the breed

	Calv-Ease				Birth				Growth				Fert				Carcase				Extra				Indexes																			
	Dir		Dtrs		GL		Bwt		200		400		600		Mwt		Milk		SS		DC		Cwt		EMA		Rib		P8		RBY		IMF		Doc		DM		EM		NT		VT	
	%		%		days		days		kg		kg		kg		sq.cm		mm		mm		%		%		%		%		%		%		%		%		%		%		%		%	
High 1%	+9.3	+6.2	-5.9	-3.0	+50	+86	+119	+132	+22	+2.1	-6.0	+62	+4.4	+2.5	+3.9	+2.4	+1.9	+2.0	+97	+141	+64	+84																						
High 5%	+7.4	+4.5	-4.3	-1.3	+46	+79	+105	+117	+20	+1.6	-4.7	+56	+3.9	+1.8	+2.8	+1.9	+1.5	+1.0	+92	+132	+59	+78																						
High 10%	+6.2	+3.7	-3.5	-0.5	+44	+75	+98	+108	+19	+1.5	-3.5	+54	+3.6	+1.4	+2.3	+1.7	+1.3	+2	+88	+126	+57	+76																						
High 15%	+5.4	+3.1	-3.1	+0.1	+42	+73	+93	+103	+18	+1.4	-2.7	+51	+3.5	+1.1	+1.9	+1.6	+1.2	+0	+85	+121	+55	+74																						
High 20%	+4.8	+2.6	-2.9	+0.6	+41	+71	+90	+99	+18	+1.3	-2.3	+50	+3.3	+0.9	+1.5	+1.5	+1.0	+0	+83	+117	+54	+73																						
High 25%	+4.1	+2.0	-2.6	+1.0	+40	+69	+88	+96	+17	+1.2	-2.0	+49	+3.2	+0.8	+1.3	+1.4	+0.8	+0	+81	+114	+53	+71																						
High 30%	+3.6	+1.6	-2.4	+1.4	+39	+68	+86	+94	+17	+1.1	-1.8	+48	+3.1	+0.7	+1.2	+1.3	+0.6	+0	+79	+111	+52	+70																						
High 35%	+3.0	+1.3	-2.2	+1.7	+38	+67	+84	+92	+16	+1.1	-1.6	+47	+3.0	+0.6	+1.0	+1.2	+0.5	+0	+77	+108	+51	+69																						
High 40%	+2.6	+0.9	-2.0	+1.9	+38	+66	+82	+89	+16	+1.0	-1.4	+46	+2.9	+0.5	+0.9	+1.1	+0.4	+0	+76	+105	+50	+67																						
High 45%	+2.1	+0.5	-1.8	+2.1	+37	+64	+81	+88	+16	+1.0	-1.3	+45	+2.7	+0.5	+0.8	+1.0	+0.3	+0	+74	+102	+49	+66																						
50%	+1.6	+0.2	-1.6	+2.3	+37	+64	+79	+86	+15	+0.9	-1.2	+44	+2.6	+0.4	+0.7	+0.9	+0.2	+0	+72	+99	+48	+65																						
Low 45%	+1.1	-0.2	-1.4	+2.5	+36	+63	+78	+84	+15	+0.8	-1.0	+43	+2.5	+0.3	+0.5	+0.8	+0.2	+0	+71	+96	+47	+64																						
Low 40%	+0.7	-0.6	-1.3	+2.7	+35	+61	+76	+83	+14	+0.8	-0.9	+42	+2.4	+0.2	+0.4	+0.7	+0.1	+0	+69	+93	+46	+63																						
Low 35%	+0.2	-0.9	-1.1	+2.9	+35	+60	+75	+81	+14	+0.7	-0.8	+41	+2.2	+0.2	+0.3	+0.5	+0.1	+0	+67	+90	+45	+61																						
Low 30%	-0.3	-1.5	-1.0	+3.0	+34	+59	+73	+79	+13	+0.6	-0.7	+40	+2.1	+0.1	+0.1	+0.4	+0.0	+0	+65	+87	+45	+60																						
Low 25%	-0.7	-1.9	-0.8	+3.2	+33	+58	+71	+77	+13	+0.5	-0.6	+39	+2.0	+0.0	+0.0	+0.3	-0.1	+0	+64	+84	+44	+58																						
Low 20%	-1.3	-2.6	-0.7	+3.3	+32	+56	+69	+75	+12	+0.5	-0.4	+38	+1.8	-0.1	-0.2	+0.1	-0.1	+0	+62	+81	+42	+56																						
Low 15%	-1.9	-3.2	-0.5	+3.6	+31	+55	+67	+73	+11	+0.3	-0.3	+36	+1.6	-0.2	-0.3	-0.1	-0.2	+0	+59	+76	+41	+55																						
Low 10%	-2.8	-4.0	-0.2	+3.9	+29	+53	+64	+69	+11	+0.1	-0.1	+35	+1.3	-0.3	-0.5	-0.3	-0.2	+0	+56	+71	+40	+52																						
Low 5%	-4.2	-5.4	+0.2	+4.3	+27	+50	+59	+64	+9	-0.4	+0.2	+33	+0.9	-0.5	-0.8	-0.8	-0.4	-6	+52	+64	+38	+48																						
Low 1%	-7.2	-8.9	+1.1	+5.2	+22	+44	+50	+51	+7	-1.4	+0.8	+28	+0.1	-1.1	-1.5	-1.9	-0.8	-14	+42	+48	+32	+39																						

### Casa Toro Simmentals – Mid June 2023 Translasman Simmental Cattle Evaluation

LOT	ANIMAL ID	CALVING EASE		GESTATION LENGTH		BIRTH WEIGHT		200 DAY GROWTH		400 DAY GROWTH		600 DAY GROWTH		MAURE WEIGHT		MILK		SOROTAL SIZE		CARCASE WEIGHT		DOCILITY		INDEX				
		EBV	ACC	EBV	ACC	EBV	ACC	EBV	ACC	EBV	ACC	EBV	ACC	EBV	ACC	EBV	ACC	EBV	ACC	EBV	ACC	EBV	ACC	DM	EM	NT	VT	
1	YSC3S048					1.7	38	39	40	73	48	87	40	97	30						51	34			82	115	54	69
2	YSCPS049			-3	25	1.2	29	29	30	50	32	62	30	66	27	17	25				31	27						
4	YSC1S103			-0.2	55	2.1	38	27	42	51	53	69	43	84	30						32	37			46	61	36	37
5	YSC3S127	6.9	25	-2.9	26	0.9	38	29	44	49	53	63	44	68	34	14	26	0.1	27	34	39			67	94	44	62	
10	YSC1S119			-2.9	25	1.2	28	29	29	50	32	63	30	66	27						32	27						
11	YSCPS089	5.6	25	-2.8	25	1.3	37	30	43	51	52	66	43	71	34	17	25	0.3	27	33	38			65	90	43	60	
12	YSC2S046					1.1	36	25	44	44	55	55	44	67	32						28	39			46	57	33	38
15	YSC1T016			-4.7	55	2.3	43	34	42	63	51	79	42	83	31						41	35			76	103	51	65
16	YSC0T023					2.9	40	40	45	73	55	88	45	100	33						49	38			71	96	50	64
17	YSC1T001					3.9	37	38	45	69	56	85	46	96	33						43	39			63	81	44	56
18	YSC2T003					0.7	34	34	42	62	52	72	41	71	30						42	36			75	104	48	64
28	YSC1S124	6.3	26	-2.8	27	1.2	39	31	45	53	55	68	45	71	35	16	25	0.3	27	36	40			70	97	45	63	
29	YSC1S099					0.8	35	35	42	62	53	73	43	76	32						43	37			76	106	48	65
31	YSCPS152					3.1	35	37	42	64	53	79	42	90	31						42	37	6	29	59	74	43	53
34	YSC3T010					1.7	34	27	42	50	52	62	42	76	31						32	37	-9	29	45	53	35	39
35	YSC2T015					1.6	28	29	29	54	34	65	31								36	26	-8	30				
37	YSC1T019					2.8	38	31	45	53	55	68	46	80	34						32	39	10	28	52	68	36	46
39	YSC2T005					2.2	37	29	43	55	52	69	43	83	32						36	37	3	28	52	62	38	43
42	YSC2S038					2.9	33	35	41	67	52	83	41	94	29						43	36			69	92	46	55
48	YSC1S141					1.4	36	28	43	51	53	62	43	72	32						34	38	2	29	52	64	37	43
49	YSCPS137					2.2	32	34	40	73	50	89	40	103	29						47	35			81	112	52	57



**THE AUSTRALIAN STOCKMANS SADDLERY**

217 Anzac Avenue,  
**TOOWOOMBA**  
**07 4632 5520**

  @australianstockmansaddlery

[www.australianstockmansaddlery.com.au](http://www.australianstockmansaddlery.com.au)

# 1 CASA TORO SIGN MAKER S48 (P)

DOB 4/8/2021  
ID YSC3S048  
REG POLLED  
SIMMENTAL

WGT 14/01/23	WGT 24/06/23	TEMPERAMENT
554	776	1

SIRE **CLAY GULLY PANASONIC**  
GLEN ANTHONY Y-ARTA AY02  
CLAY GULLY EASTER

RAW	DATE	WEIGHT	EMA
DATA	RIB	RUMP	IMF

DAM **CASA TORO P237**  
LUCRANA LEGEND  
BILLA PARK J078

Sign Maker deserves his spot at the front of the catalogue. A well made, Balanced Sire that is sure to attract a lot of attention. He exhibits a soft clean tropical coat with an easy going attitude. A heifers first calf.

	GROWTH								CARCASS					INDEX VALUES	
	CE	BW	WW	YW	MILK	MWWT	STAY	DOC	CW	REA	FAT	MARB	YG	API	TI
EPD	5.7	6.1	65.1	97.9	5	66.3	15.5	12.8	22.8	0.72	-0.134	-0.1	-0.51	98.31	59.86
ACC	0.1	0.11	0.11	0.1	0.05	0.06	0.08	0.09	0.1	0.09	0.08	0.08	0.08		
%RK	45	60	70	60	30	60	30	10	40	75	80	55	60	40	40

BUYER ..... \$ .....



## 2 CASA TORO SCOTT S49 (P)

DOB 29/7/2021  
ID YSCPS049  
REG POLLED  
SIMMENTAL

WGT 14/01/23	WGT 24/06/23	TEMPERAMENT
512	788	1

RAW DATA	DATE	WEIGHT	EMA
	RIB	RUMP	IMF

SIRE GLEN ANTHONY Y-ARTA AY02  
**CLAY GULLY PANASONIC**  
CLAY GULLY EASTER

DAM CASA TORO RED HEART H2  
**BILLA PARK GHD Q135**  
BILLA PARK GHD G201

A heavy pigmented Blonde bull. Another correct and balanced Panasonic son that has a lot to offer the industry. If you're after a safe and consistent producer don't look any further.

	GROWTH								CARCASS					INDEX VALUES	
	CE	BW	WW	YW	MILK	MWWT	STAY	DOC	CW	REA	FAT	MARB	YG	API	TI
EPD	6.5	5.5	68.7	101.4	4.6	64.7	15.4	11.9	29.2	0.77	-0.131	-0.11	-0.49	100.61	62.08
ACC	0.11	0.11	0.12	0.11	0.06	0.08	0.08	0.1	0.09	0.09	0.08	0.09	0.08		
%RK	35	45	55	50	35	70	30	10	15	60	75	60	70	35	35

BUYER ..... \$ .....



## 3 CASA TORO SUPERCHARGER S114 (P)

DOB 9/10/2021  
ID YSCOS114  
REG POLLED  
SIMMENTAL

WGT 14/01/23	WGT 24/06/23	TEMPERAMENT
582	780	1

RAW DATA	DATE	WEIGHT	EMA
	RIB	RUMP	IMF

SIRE BILLA PARK HIGH IMPACT H186  
**BILLA PARK NOTETAKER N141**  
BILLA PARK POLL G207

DAM WATERFRONT DIGBY-D208  
**BILLA PARK H67**

S114 is the first of our Notetaker sons for 2023. Supercharger has that combination of muscle and softness that we are all chasing in a structurally correct frame. The Genetic strength in this young sire is endless. His Dam H67 has been one of our most consistent producer and is the mother of our resident Sire: Q036 who is really leaving his mark as you will see by his first progeny to sell at lots 15 -17. A sire that is hard to let go.

	GROWTH								CARCASS					INDEX VALUES	
	CE	BW	WW	YW	MILK	MWWT	STAY	DOC	CW	REA	FAT	MARB	YG	API	TI
EPD	4	7.2	74	106.8	3	65.5	11.2	10.6	9.7	0.74	-0.132	-0.01	-0.57	93.08	65.09
ACC	0.1	0.1	0.12	0.11	0.04	0.07	0.06	0.09	0.08	0.08	0.07	0.08	0.07		
%RK	70	85	30	35	65	65	80	20	95	70	75	20	20	55	55

BUYER ..... \$ .....





## 4 CASA TORO STAKEHOLDER S103 (P)

DOB 10/10/2021  
ID YSC1S103  
REG POLLED  
SIMMENTAL

WGT 14/01/23	WGT 24/06/23	TEMPERAMENT
536	810	1

RAW DATA	DATE	WEIGHT	EMA
	RIB	RUMP	IMF

SIRE BILLA PARK HIGH IMPACT H186  
BILLA PARK POLL LETHAL WEAPON  
BILLA PARK CLAIRE

DAM BILLA PARK POLL FUSION F115  
BILLA PARK J66

A moderate frame bull that packs a punch. It is hard to see the weight in this sire but that is a great indicator of a good bull. J66 has been a top producer in our herd and will enter our donor program after this year's calving. Perfectly marked with panda eyes and chilled out temperament. S103 ticks a lot of boxes.

	GROWTH								CARCASS					INDEX VALUES	
	CE	BW	WW	YW	MILK	MWWT	STAY	DOC	CW	REA	FAT	MARB	YG	API	TI
EPD	5.4	5.9	69.4	103.2	3.5	63.2	7.8	5.3	13.6	0.72	-0.123	-0.04	-0.52	87.45	63.41
ACC	0.06	0.06	0.08	0.08	0.03	0.07	0.01	0.04	0.03	0.03	0.04	0.05	0.03		
%RK	45	55	50	45	60	75	100	95	85	75	50	30	50	75	75

BUYER ..... \$ .....



## 5 CASA TORO STREETWISE S121 (P)

DOB 21/10/2021  
ID YSC3S127  
REG POLLED  
SIMMENTAL

WGT 14/01/23	WGT 24/06/23	TEMPERAMENT
556	738	1.5

RAW DATA	DATE	WEIGHT	EMA
	RIB	RUMP	IMF

SIRE BILLA PARK HIGH IMPACT H186  
BILLA PARK POLL G207  
BILLA PARK NOTETAKER N141

DAM BILLA PARK POLL FUSION F115  
BILLA PARK DANI N61  
BILLA PARK DANI D25

Well put together mobile sire. Another Notetaker son out of the ever-consistent Dani Family line. Whether you're a bullock fattener or trying to breed a line of replacement female Streetwise will do the job for you.

	GROWTH								CARCASS					INDEX VALUES	
	CE	BW	WW	YW	MILK	MWWT	STAY	DOC	CW	REA	FAT	MARB	YG	API	TI
EPD	3.9	6.7	57.6	82.9	3.3	54	11.2	8.4	12.2	0.79	-0.134	-0.04	-0.58	86.29	54.88
ACC	0.09	0.1	0.11	0.1	0.04	0.06	0.06	0.09	0.09	0.08	0.08	0.09	0.07		
%RK	70	75	95	95	60	100	80	45	90	50	80	30	15	80	80

BUYER ..... \$ .....



## 6 CASA TORO STRAIGHT EDGE (P)

DOB 6/10/2021  
ID S110 POLLED  
UNREG SIMMENTAL

SIRE BILLA PARK HIGH IMPACT H186  
BILLA PARK NOTETAKER N141  
BILLA PARK POLL G207

DAM BILLA PARK G79



WGT 14/01/23	WGT 24/06/23	TEMPERAMENT
552	772	1.5

RAW DATA	DATE	WEIGHT	EMA
	RIB	RUMP	IMF

BUYER ..... \$ .....

## 7 CASA TORO STORM (P)

DOB 18/9/2021  
ID S097 POLLED  
UNREG SIMMENTAL

SIRE WOONALLEE GOLDRUSH  
BILLA PARK LIGHTING L61  
BILLA PARK H040

DAM BILLA PARK PUREBRED COW



WGT 14/01/23	WGT 24/06/23	TEMPERAMENT
550	798	1.5

RAW DATA	DATE	WEIGHT	EMA
	RIB	RUMP	IMF

BUYER ..... \$ .....

## 8 CASA TORO SLIDER (SC)

DOB 5/8/2021  
ID S073 SCUR  
UNREG SIMMENTAL

SIRE WOONALLEE GOLDRUSH  
BILLA PARK LIGHTING L61  
BILLA PARK H040

DAM WATERFRONT FLORIAN  
BILLA PARK K46  
BILLA PARK G107



WGT 14/01/23	WGT 24/06/23	TEMPERAMENT
632	806	1

RAW DATA	DATE	WEIGHT	EMA
	RIB	RUMP	IMF

BUYER ..... \$ .....

## 9 CASA TORO SYSTEM CHECK (P)

DOB 30/8/2021  
ID S075 POLLED  
UNREG SIMMENTAL

SIRE WOONALLEE GOLDRUSH  
BILLA PARK LIGHTING L61  
BILLA PARK H040

DAM BILLA PARK POLL CHURCHILL  
BILLA PARK M198



WGT 14/01/23	WGT 24/06/23	TEMPERAMENT
650	804	1

RAW DATA	DATE	WEIGHT	EMA
	RIB	RUMP	IMF

BUYER ..... \$ .....

## 10 CASA TORO S119

DOB 10/9/2021  
ID YSC1S119 HORN  
REG SIMMENTAL

SIRE KYKSO HANO  
BAR 5 SA OPTIMAL 447L  
SALERIKA ZINKA 5DE



WGT 14/01/23	WGT 24/06/23	TEMPERAMENT
558	760	2

RAW DATA	DATE	WEIGHT	EMA
	RIB	RUMP	IMF

DAM CASA TORO M228

	GROWTH								CARCASS					INDEX VALUES	
	CE	BW	WW	YW	MILK	MWWT	STAY	DOC	CW	REA	FAT	MARB	YG	API	TI
EPD	7.5	4.1	77	107.5	4.6	70.8	5.9	11.8	21.2	0.84	-0.137	-0.07	-0.56	89.9	69.92
ACC	0.11	0.13	0.13	0.12	0.08	0.11	0.08	0.11	0.1	0.09	0.07	0.1	0.08		
%RK	25	20	25	35	35	35	100	10	50	35	90	45	20	70	70

An AI son the the Southern African Bred Bar 5 Mr Optimal 447L.

BUYER ..... \$ .....

# 11 CASA TORO SLAM DUNK S89 (P)

DOB 18/9/2021  
ID YSCPS089  
REG POLLED SIMMENTAL



SIRE GLEN ANTHONY Y-ARTA AY02  
**CLAY GULLY PANASONIC**  
CLAY GULLY EASTER

DAM DARAABAH MCCOOL  
**BILLA PARK Q006**  
BILLA PARK POLL FENELLA F140

WGT 14/01/23	WGT 24/06/23	TEMPERAMENT
502	752	1

RAW DATA	DATE	WEIGHT	EMA
	RIB	RUMP	IMF

Slam Dunk is a heifers first calf and is hard to walk past without admiring his quality. Out of our only McCool daughter who is fast rising to one of our leading females. Slam Dunk has a beautiful sleek coat and a loose skin type perfect for the QLD environment. Don't overlook this quality sire, we rate him extremely high.

	GROWTH								CARCASS					INDEX VALUES	
	CE	BW	WW	YW	MILK	MWWT	STAY	DOC	CW	REA	FAT	MARB	YG	API	TI
EPD	5.8	5.7	68	100.5	4.1	66.4	14.2	11.7	22.3	0.69	-0.137	-0.11	-0.51	96.95	61.61
ACC	0.09	0.1	0.1	0.1	0.05	0.07	0.07	0.09	0.09	0.08	0.07	0.07	0.07		
%RK	40	50	60	50	45	60	45	10	45	80	90	60	60	45	45

BUYER ..... \$ .....

# 12 CASA TORO SEYMOR S46 (P)

DOB 6/6/2021  
ID YSC2S046  
REG POLLED SIMMENTAL



SIRE GLEN ANTHONY Y-ARTA AY02  
**CLAY GULLY PANASONIC**  
CLAY GULLY EASTER

DAM LUCRANA LEGEND  
**CASA TORO P233**  
BILLA PARK J88

WGT 14/01/23	WGT 24/06/23	TEMPERAMENT
610	830	1

RAW DATA	DATE	WEIGHT	EMA
	RIB	RUMP	IMF

	GROWTH								CARCASS					INDEX VALUES	
	CE	BW	WW	YW	MILK	MWWT	STAY	DOC	CW	REA	FAT	MARB	YG	API	TI
EPD	6	6.2	66.6	99.3	5.2	67.5	13.7	12.3	22.4	0.71	-0.136	-0.11	-0.52	94.87	60.43
ACC	0.1	0.11	0.11	0.11	0.06	0.06	0.08	0.09	0.1	0.09	0.08	0.09	0.08		
%RK	40	60	65	55	25	55	50	10	40	75	85	60	50	50	50

BUYER ..... \$ .....

# 13 CASA TORO SPLINTER (P)

DOB 6/8/2021  
ID S093  
UNREG POLLED SIMMENTAL



SIRE GLEN ANTHONY Y-ARTA AY02  
**CLAY GULLY PANASONIC**  
CLAY GULLY EASTER

DAM **BILLA PARK Q112**

WGT 14/01/23	WGT 24/06/23	TEMPERAMENT
536	788	1

RAW DATA	DATE	WEIGHT	EMA
	RIB	RUMP	IMF

BUYER ..... \$ .....

# 14 CASA TORO SPY (P)

DOB 21/10/2021  
ID S120  
UNREG POLLED SIMMENTAL



SIRE BILLA PARK HIGH IMPACT H186  
**BILLA PARK NOTETAKER N141**  
BILLA PARK POLL G207

DAM **BILLA PARK L341**

WGT 14/01/23	WGT 24/06/23	TEMPERAMENT
460	692	1.5

RAW DATA	DATE	WEIGHT	EMA
	RIB	RUMP	IMF

BUYER ..... \$ .....

# 15 CASA TORO TIN TIN T16

DOB 28/2/2022  
 ID YSC1T016  
 REG HORN  
 SIMMENTAL

WGT 03/01/23	WGT 24/06/23	TEMPERAMENT
384	614	1.5

RAW DATA	DATE	WEIGHT	EMA
	RIB	RUMP	IMF

SIRE **CASA TORO Q036**  
 BILLA PARK H67

DAM **BILLA PARK SUSIE F8**  
 BARANA ALLISTER  
 BILLA PARK SUSIE

The first of our yearling bulls for the year. A quality individual who ticks a lot of boxes. Phenotypically very hard to fault. Exceptional length with a balanced muscle pattern and oozes softness. Genotypically he is the first calf we offer by our new Sire "Q36" who is really raising the bar and out of the 13yr Old Susie "F8" who was the mother of the 2017 Ekka Grand Champion female. At only 18 months you can see "SIRE" written all over him.

	GROWTH								CARCASS					INDEX VALUES	
	CE	BW	WW	YW	MILK	MWWT	STAY	DOC	CW	REA	FAT	MARB	YG	API	TI
EPD	6.5	6.2	74.4	108.7	5	66.2	9.1	9.8	11	0.7	-0.112	0	-0.5	94.59	67.07
ACC	0.05	0.07	0.11	0.1	0.03	0.06	0.02	0.08	0.02	0.02	0.01	0.01	0.02		
%RK	35	60	30	30	30	60	95	25	90	80	20	20	65	50	50

BUYER ..... \$ .....



# 16 CASA TORO TOP CUT T23

DOB 21/3/2022  
 ID YSC0T023  
 REG HORN  
 SIMMENTAL

WGT 03/01/23	WGT 24/06/23	TEMPERAMENT
412	582	2

RAW DATA	DATE	WEIGHT	EMA
	RIB	RUMP	IMF

SIRE **CASA TORO Q036**  
 BILLA PARK H67

DAM **BILLA PARK D925**  
 BARANA ALLISTER

"Wow" was my first reaction when I laid eyes on this calf. From that day I knew that "Top Cut" was destined for big things. His Dam 925 is a Barana Allister daughter and if you follow us, you know what we think of the Allister females. 925 entered the donor pen this year at 15 years and we all know they don't get old unless they are a good one. T23 is superbly balanced and is full of shape and presence.

	GROWTH								CARCASS					INDEX VALUES	
	CE	BW	WW	YW	MILK	MWWT	STAY	DOC	CW	REA	FAT	MARB	YG	API	TI
EPD	8	6.4	85.7	125	5.5	74.7	7.1	8.8	10.4	0.7	-0.113	-0.01	-0.5	96.27	74.13
ACC	0.07	0.08	0.15	0.13	0.03	0.06	0.02	0.12	0.02	0.02	0.01	0.02	0.01		
%RK	20	65	10	10	25	20	100	35	95	80	25	20	65	45	45

BUYER ..... \$ .....



# 17 CASA TORO TEXAS T1 (P)

DOB 14/1/2022  
ID YSC1T001  
REG POLLED  
SIMMENTAL

WGT 03/01/23	WGT 24/06/23	TEMPERAMENT
446	652	1.5

RAW DATA	DATE	WEIGHT	EMA
	RIB	RUMP	IMF

SIRE **CASA TORO Q036**

BILLA PARK H67

WOONALLEE GOLDRUSH

DAM **BILLA PARK KAITLYN K112**

BILLA PARK POLL FINCH F33

A genetic powerhouse. His dam K112 produces time after time for example her "P" calf equal topped our 2020 draft at \$16000 and her "R" son sold last year for \$20000. If you after a consistent performer that will take you herd forward, look no further.

	GROWTH								CARCASS					INDEX VALUES	
	CE	BW	WW	YW	MILK	MWWT	STAY	DOC	CW	REA	FAT	MARB	YG	API	TI
EPD	5.4	7.9	85.1	123.2	4	71.3	13.4	7.3	7.7	0.26	-0.143	-0.25	-0.45	88.63	64.62
ACC	0.29	0.31	0.32	0.31	0.11	0.13	0.23	0.29	0.27	0.28	0.23	0.27	0.23		
%RK	45	95	10	10	50	35	55	65	100	100	95	95	90	75	75

BUYER ..... \$ .....



# 18 CASA TORO THOMAS T3

DOB 7/1/2022  
ID YSC2T003  
REG HORN  
SIMMENTAL

WGT 03/01/23	WGT 24/06/23	TEMPERAMENT
432	620	1.5

RAW DATA	DATE	WEIGHT	EMA
	RIB	RUMP	IMF

SIRE **BILLA PARK LIGHTING L61**

BILLA PARK H040

BILLA PARK POLL FUSION F115

DAM **BILLA PARK M154**

BILLA PARK FEMME F40

A real game changer. His Dam is a half sister to Billa Park Nanango N140 who is producing well in the Karragarra Herd and I rated him as one of the Best bulls I have bred. A growthy individual that exhibits a soft muscle pattern with the ability to cover the ground with ease.

	GROWTH								CARCASS					INDEX VALUES	
	CE	BW	WW	YW	MILK	MWWT	STAY	DOC	CW	REA	FAT	MARB	YG	API	TI
EPD	3.5	5.6	59.8	89.6	2.9	59.2	11.5	10.7	20.1	0.67	-0.143	-0.24	-0.53	78.46	52.81
ACC	0.15	0.15	0.15	0.15	0.06	0.08	0.11	0.13	0.14	0.14	0.12	0.13	0.12		
%RK	75	45	90	80	65	90	75	20	55	85	95	95	40	95	95

BUYER ..... \$ .....



## 19 CASA TORO SURAT (P)

DOB 24/10/2021  
ID S102 POLLED  
UNREG SIMMENTAL



SIRE TNT ACCELERATOR S226  
CASA TORO RED LONE RANGER L14  
LRX CHEYENNE 14U

DAM CASA TORO Q145  
BILLA PARK P89

WGT 14/01/23	WGT 24/06/23	TEMPERAMENT
490	686	1

RAW DATA	DATE	WEIGHT	EMA
	RIB	RUMP	IMF

BUYER ..... \$ .....

## 20 CASA TORO SOLSTICE S88 (P)

DOB 3/11/2021  
ID YSCPS088 POLLED  
REG SIMMENTAL



SIRE GLEN ANTHONY Y-ARTA AY02  
CLAY GULLY PANASONIC  
CLAY GULLY EASTER

DAM CASA TORO RED LONE RANGER L14  
CASA TORO KATARINA Q140  
CASA TORO KATARINA K6

WGT 14/01/23	WGT 24/06/23	TEMPERAMENT
499	740	1.5

RAW DATA	DATE	WEIGHT	EMA
	RIB	RUMP	IMF

	GROWTH								CARCASS					INDEX VALUES	
	CE	BW	WW	YW	MILK	MWWT	STAY	DOC	CW	REA	FAT	MARB	YG	API	TI
EPD	6	4.4	70.9	104.4	3.4	56.6	16.7	10.7	30.2	0.9	-0.104	-0.17	-0.46	101.57	61.82
ACC	0.13	0.13	0.13	0.13	0.09	0.1	0.11	0.2	0.12	0.12	0.11	0.11	0.1		
%RK	40	25	45	40	60	95	15	20	15	20	10	80	85	30	30

BUYER ..... \$ .....

## 21 CASA TORO SUNDOWN (P)

DOB 16/9/2021  
ID ?YSC2S122 POLLED  
REG SIMMENTAL

WGT 14/01/23	WGT 24/06/23	TEMPERAMENT
512	720	1

RAW DATA	DATE	WEIGHT	EMA
	RIB	RUMP	IMF

SIRE SIEGFRIED 146340  
PIGGOTTRANGE EMPEROR  
PIGGOTTRANGE BENITA

DAM BILLA PARK POLL FUSION F115  
BILLA PARK P5  
BILLA PARK BUSHLANDS D862

Old school genetics here going back to some of the Breed legends. A correct and well put together son of Pigott Range Emperor.

	GROWTH								CARCASS					INDEX VALUES	
	CE	BW	WW	YW	MILK	MWWT	STAY	DOC	CW	REA	FAT	MARB	YG	API	TI
EPD	7.6	4.7	54.6	81.2	6.8	52.9	11.3	8.1	17.4	0.69	-0.116	-0.06	-0.48	92.22	55.42
ACC	0.1	0.13	0.14	0.13	0.09	0.13	0.08	0.06	0.11	0.1	0.06	0.07	0.08		
%RK	25	25	95	95	10	100	75	50	70	80	30	40	80	60	60

BUYER ..... \$ .....



## 22 CASA TORO STEEL (P)

DOB 16/8/2021  
ID S085 POLLED  
UNREG SIMMENTAL

SIRE GLEN ANTHONY Y-ARTA AY02  
**CLAY GULLY PANASONIC**  
CLAY GULLY EASTER

DAM LUCRANA LEGEND  
**BILLA PARK P110**  
BILLA PARK F99



WGT 14/01/23	WGT 24/06/23	TEMPERAMENT
538	800	1

RAW DATA	DATE	WEIGHT	EMA
	RIB	RUMP	IMF

BUYER ..... \$ .....

## 25 CASA TORO SHIP (P)

DOB 18/9/2021  
ID S1088 POLLED  
UNREG SIMMENTAL

SIRE GLEN ANTHONY Y-ARTA AY02  
**CLAY GULLY PANASONIC**  
CLAY GULLY EASTER

DAM **BILLA PARK P174**



WGT 14/01/23	WGT 24/06/23	TEMPERAMENT
473	736	1

RAW DATA	DATE	WEIGHT	EMA
	RIB	RUMP	IMF

BUYER ..... \$ .....

## 23 CASA TORO SEA WORTHY (P)

DOB 19/8/2021  
ID S078 POLLED  
UNREG SIMMENTAL

SIRE GLEN ANTHONY Y-ARTA AY02  
**CLAY GULLY PANASONIC**  
CLAY GULLY EASTER

DAM LUCRANA LEGEND  
**BILLA PARK P242**  
BILLA PARK L17

WGT 14/01/23	WGT 24/06/23	TEMPERAMENT
520	772	1.5

RAW DATA	DATE	WEIGHT	EMA
	RIB	RUMP	IMF

BUYER ..... \$ .....

## 26 CASA TORO SHAKER (P)

DOB 20/8/2021  
ID S077 POLLED  
UNREG SIMMENTAL

SIRE GLEN ANTHONY Y-ARTA AY02  
**CLAY GULLY PANASONIC**  
CLAY GULLY EASTER

DAM WOONALLEE KANAS  
**BILLA PARK P134**  
BILLA PARK G54

WGT 14/01/23	WGT 24/06/23	TEMPERAMENT
532	784	1

RAW DATA	DATE	WEIGHT	EMA
	RIB	RUMP	IMF

BUYER ..... \$ .....

## 24 CASA TORO S72 (SC)

DOB 22/7/2021  
ID S072 SCUR  
UNREG SIMMENTAL

SIRE WOONALLEE GOLDRUSH  
**BILLA PARK LIGHTING L61**  
BILLA PARK H040

DAM **BILLA PARK M5**

WGT 14/01/23	WGT 24/06/23	TEMPERAMENT
642	836	1.5

RAW DATA	DATE	WEIGHT	EMA
	RIB	RUMP	IMF

BUYER ..... \$ .....

## 27 CASA TORO SLIPFORM

DOB 11/11/2021  
ID S100 HORN  
UNREG SIMMENTAL

SIRE WOONALLEE GOLDRUSH  
**BILLA PARK LIGHTING L61**  
BILLA PARK H040

DAM **BILLA PARK P89**  
BILLA PARK G202

WGT 14/01/23	WGT 24/06/23	TEMPERAMENT
467	684	2

RAW DATA	DATE	WEIGHT	EMA
	RIB	RUMP	IMF

BUYER ..... \$ .....

## 28 CASA TORO S124 (P)

DOB 28/10/2021  
ID YSC1S124  
REG POLLED  
SIMMENTAL

WGT 14/01/23	WGT 24/06/23	TEMPERAMENT
546	824	1

RAW DATA	DATE	WEIGHT	EMA
	RIB	RUMP	IMF

SIRE TNT ACCELERATOR S226  
CASA TORO RED LONE RANGER L14  
LRX CHEYENNE 14U

DAM BILLA PARK POLL FUSION F115  
BILLA PARK P213  
BILLA PARK ADELAIDE

	GROWTH								CARCASS					INDEX VALUES	
	CE	BW	WW	YW	MILK	MWWT	STAY	DOC	CW	REA	FAT	MARB	YG	API	TI
EPD	5.5	6	70.5	104.9	4.1	61.1	12.5	9.9	25.2	0.84	-0.115	-0.13	-0.49	92.18	61.35
ACC	0.11	0.11	0.12	0.12	0.08	0.09	0.09	0.12	0.11	0.11	0.09	0.1	0.09		
%RK	45	55	45	40	45	85	65	25	30	35	25	65	70	60	60

BUYER ..... \$ .....

## 29 CASA TORO SHANE S99 (P)

DOB 10/11/2021  
ID YSC1S099  
REG POLLED  
SIMMENTAL



WGT 14/01/23	WGT 24/06/23	TEMPERAMENT
458	670	1

RAW DATA	DATE	WEIGHT	EMA
	RIB	RUMP	IMF

SIRE WOONALLEE GOLDRUSH  
BILLA PARK LIGHTING L61  
BILLA PARK H040

DAM BILLA PARK POLL CHURCHILL  
BILLA PARK M197  
BILLA PARK BUSHLANDS D874

	GROWTH								CARCASS					INDEX VALUES	
	CE	BW	WW	YW	MILK	MWWT	STAY	DOC	CW	REA	FAT	MARB	YG	API	TI
EPD	5.3	5.2	66.2	96	3.3	64.1	8.5	7.2	15.9	0.72	-0.133	-0.2	-0.54	79.73	58.58
ACC	0.09	0.09	0.1	0.1	0.04	0.05	0.07	0.08	0.09	0.09	0.07	0.08	0.07		
%RK	50	35	65	65	60	70	95	70	75	75	80	85	35	95	95

BUYER ..... \$ .....

## 30 CASA TORO S70

DOB 10/8/2021  
ID S070  
UNREG HORN  
SIMMENTAL

WGT 14/01/23	WGT 24/06/23	TEMPERAMENT
552	714	1.5

RAW DATA	DATE	WEIGHT	EMA
	RIB	RUMP	IMF

SIRE WOONALLEE GOLDRUSH  
BILLA PARK LIGHTING L61  
BILLA PARK H040

DAM CASA TORO PUREBRED COW

BUYER ..... \$ .....

## 31 CASA TORO MADALYN S152 (P)

DOB 30/11/2021  
ID YSCPS152  
REG POLLED  
SIMMENTAL



SIRE GLEN ANTHONY Y-ARTA AY02  
CLAY GULLY PANASONIC  
CLAY GULLY EASTER

DAM CASA TORO RED HEART H2  
BILLA PARK MADALYN M119

WGT 14/01/23	WGT 24/06/23	TEMPERAMENT
435	694	1

RAW DATA	DATE	WEIGHT	EMA
	RIB	RUMP	IMF

	GROWTH								CARCASS					INDEX VALUES	
	CE	BW	WW	YW	MILK	MWWT	STAY	DOC	CW	REA	FAT	MARB	YG	API	TI
EPD	6.2	5.3	66.4	98.9	4.6	63.4	15.7	12.8	28.4	0.75	-0.132	-0.1	-0.49	101.08	61.16
ACC	0.1	0.11	0.1	0.1	0.06	0.07	0.07	0.09	0.09	0.09	0.08	0.08	0.08		
%RK	35	40	65	55	35	75	25	10	20	65	75	55	70	30	30

BUYER ..... \$ .....



### 32 CASA TORO T014 (P)

DOB 10/1/2022  
ID YSCOT014  
REG POLLED  
SIMMENTAL

WGT 14/01/23	WGT 24/06/23	TEMPERAMENT
426	598	2

RAW DATA	DATE	WEIGHT	EMA
	RIB	RUMP	IMF

SIRE BILLA PARK HIGH IMPACT H186  
BILLA PARK NOTETAKER N141  
BILLA PARK POLL G207

DAM CASA TORO K081

	GROWTH								CARCASS					INDEX VALUES	
	CE	BW	WW	YW	MILK	MWWT	STAY	DOC	CW	REA	FAT	MARB	YG	API	TI
EPD	6.4	4.3	61.9	87.6	3.8	56.7	12.1	8.6	16.4	0.62	-0.094	0.15	-0.4		
ACC	PE	PE	PE	PE	PE	PE	PE	PE	PE	PE	PE	PE	PE		
%RK	35	20	80	85	50	95	70	40	75	95	10	3	95		

BUYER ..... \$ .....

### 34 CASA TORO TRUCKER T10 (P)

DOB 2/4/2022  
ID YSC3T010  
REG POLLED  
SIMMENTAL

WGT 03/01/23	WGT 24/06/23	TEMPERAMENT
303	497	1

RAW DATA	DATE	WEIGHT	EMA
	RIB	RUMP	IMF

SIRE BILLA PARK HIGH IMPACT H186  
BILLA PARK NOTETAKER N141  
BILLA PARK POLL G207

DAM BILLA PARK POLL CHURCHILL  
BILLA PARK LAUREN L25  
BILLA PARK ALMA F11

	GROWTH								CARCASS					INDEX VALUES	
	CE	BW	WW	YW	MILK	MWWT	STAY	DOC	CW	REA	FAT	MARB	YG	API	TI
EPD	2.8	6.3	55.3	76.4	2.5	56.3	13.1	8.4	15.2	0.97	-0.15	-0.19	-0.66	79.82	50.48
ACC	0.29	0.31	0.35	0.34	0.11	0.16	0.22	0.31	0.28	0.27	0.26	0.29	0.24		
%RK	85	65	95	100	75	95	55	45	80	10	100	85	1	95	95

BUYER ..... \$ .....

### 33 CASA TORO S155 (P)

DOB 3/12/2021  
ID S155  
UNREG POLLED  
SIMMENTAL

WGT 03/01/23	WGT 24/06/23	TEMPERAMENT
400	646	1.5

RAW DATA	DATE	WEIGHT	EMA
	RIB	RUMP	IMF

SIRE GLEN ANTHONY Y-ARTA AY02  
CLAY GULLY PANASONIC  
CLAY GULLY EASTER

DAM BILLA PARK FUSION  
CASA TORO R2  
BILLA PARK F123

BUYER ..... \$ .....

### 35 CASA TORO TIM T15

DOB 15/3/2022  
ID YSC2T015  
REG HORN  
SIMMENTAL

WGT 03/01/23	WGT 24/06/23	TEMPERAMENT
364	546	1

RAW DATA	DATE	WEIGHT	EMA
	RIB	RUMP	IMF

SIRE WOONALLEE GOLDRUSH  
BILLA PARK LIGHTING L61  
BILLA PARK H040

DAM BARANA ALLISTER  
BILLA PARK DIMPLES D42  
BILLA PARK ULTIMA

	GROWTH								CARCASS					INDEX VALUES	
	CE	BW	WW	YW	MILK	MWWT	STAY	DOC	CW	REA	FAT	MARB	YG	API	TI
EPD	4.7	5.1	59.2	86.1	4.3	61.7	11.7	8.2	15.3	0.69	-0.122	-0.16	-0.5	84.67	55.27
ACC	0.1	0.12	0.16	0.14	0.05	0.09	0.09	0.14	0.09	0.09	0.07	0.08	0.07		
%RK	55	35	90	90	40	80	75	45	80	80	45	75	65	85	85

BUYER ..... \$ .....

# 36 CASA TORO TAKEOUT T8

DOB 12/1/2021  
ID T8  
UNREG  
HORN  
SIMMENTAL

WGT 03/01/23	WGT 24/06/23	TEMPERAMENT
439	636	2

RAW DATA	DATE	WEIGHT	EMA
	RIB	RUMP	IMF

SIRE WOONALLEE GOLDRUSH  
BILLA PARK LIGHTING L61  
BILLA PARK H040

DAM BILLA PARK 7/8 GRADE SIMMENTAL COW

BUYER ..... \$ .....

# 37 CASA TORO TOWNSVILLE T19

DOB 3/3/2022  
ID YSC1T019  
REG  
HORN  
SIMMENTAL

WGT 03/01/23	WGT 24/06/23	TEMPERAMENT
372	544	1.5

RAW DATA	DATE	WEIGHT	EMA
	RIB	RUMP	IMF

SIRE WOONALLEE GOLDRUSH  
BILLA PARK LIGHTING L61  
BILLA PARK H040

DAM WATERFRONT DIGBY-D208  
BILLA PARK J158  
BILLA PARK F53

	GROWTH								CARCASS					INDEX VALUES	
	CE	BW	WW	YW	MILK	MWWT	STAY	DOC	CW	REA	FAT	MARB	YG	API	TI
EPD	3.8	5.3	65.5	96.1	2.9	62.3	13.8	8.5	15.2	0.68	-0.127	-0.18	-0.51	89.13	58.03
ACC	0.08	0.09	0.09	0.09	0.04	0.05	0.06	0.07	0.08	0.08	0.07	0.07	0.07		
%RK	70	40	70	65	65	80	50	40	80	85	65	80	55	70	70

BUYER ..... \$ .....

# 38 CASA TORO TALWOOD T39 (P)

DOB 18/4/2022  
ID YSC3T039  
REG  
POLLED  
SIMMENTAL

WGT 03/01/23	WGT 24/06/23	TEMPERAMENT
352	526	1

RAW DATA	DATE	WEIGHT	EMA
	RIB	RUMP	IMF

SIRE BILLA PARK HIGH IMPACT H186  
BILLA PARK NOTETAKER N141  
BILLA PARK POLL G207

DAM BILLA PARK POLL CHURCHILL  
BILLA PARK GISELE G11  
BILLA PARK TRISH

A Half brother to Billa Park Maximum Impact who did an outstanding job in the Lucrana herd. The youngest bull in our draft with a big future in front of him.

	GROWTH								CARCASS					INDEX VALUES	
	CE	BW	WW	YW	MILK	MWWT	STAY	DOC	CW	REA	FAT	MARB	YG	API	TI
EPD	2.7	7.4	66	92.4	1.9	62.1	10.6	8.5	11.8	0.76	-0.138	-0.04	-0.58	84.6	58.94
ACC	0.11	0.12	0.12	0.12	0.05	0.07	0.07	0.11	0.09	0.09	0.07	0.09	0.08		
%RK	85	85	65	75	85	80	85	40	90	60	90	30	15	85	85

BUYER ..... \$ .....

# 39 CASA TORO TOOBEAH T5 (P)

DOB 8/1/2022  
ID YSC2T005  
REG  
POLLED  
RED SIMMENTAL



WGT 24/06/23	TEMPERAMENT
666	1.5

RAW DATA	DATE	WEIGHT	EMA
	RIB	RUMP	IMF

SIRE WOONALLEE GOLDRUSH  
BILLA PARK LIGHTING L61  
BILLA PARK H040

DAM CASA TORO RED HEART H2  
BILLA PARK LAUREN P72  
BILLA PARK LAUREN L25

A classy young bull that oozes softness.

	GROWTH								CARCASS					INDEX VALUES	
	CE	BW	WW	YW	MILK	MWWT	STAY	DOC	CW	REA	FAT	MARB	YG	API	TI
EPD	4.2	4.9	61.9	90.4	2.9	56.2	12.3	9.3	22.1	0.78	-0.127	-0.2	-0.51	84.81	55.49
ACC	0.1	0.1	0.1	0.1	0.05	0.06	0.06	0.09	0.09	0.09	0.08	0.08	0.07		
%RK	65	30	80	80	65	95	65	30	45	55	65	85	55	85	85

BUYER ..... \$ .....

## 40 CASA TORO T310 (P)

DOB 1/2/2022  
ID T310  
UNREG  
POLLED  
RED SIMMENTAL



SIRE WOONALLEE GOLDRUSH  
BILLA PARK LIGHTING L61  
BILLA PARK H040

DAM GLENGYLE SIMMENTAL COW

WGT 24/06/23	TEMPERAMENT
638	1.5

RAW DATA	DATE	WEIGHT	EMA
RIB		RUMP	IMF

	GROWTH								CARCASS					INDEX VALUES	
	CE	BW	WW	YW	MILK	MWWT	STAY	DOC	CW	REA	FAT	MARB	YG	API	TI
EPD															
ACC															
%RK															

BUYER ..... \$ .....

## 41 CASA TORO S038 (P)

DOB 17/4/2021  
ID YSC2S038  
REG  
POLLED  
RED SIMMENTAL



SIRE TNT ACCELERATOR S226  
CASA TORO RED LONE RANGER L14  
LRX CHEYENNE 14U

DAM CASA TORO RED HEART H2  
CASA TORO P132  
BILLA PARK H188

WGT 14/01/23	WGT 24/06/23	TEMPERAMENT
678	884	1

RAW DATA	DATE	WEIGHT	EMA
RIB		RUMP	IMF

	GROWTH								CARCASS					INDEX VALUES	
	CE	BW	WW	YW	MILK	MWWT	STAY	DOC	CW	REA	FAT	MARB	YG	API	TI
EPD	6.8	4.4	70.8	103.4	4.3	56.1	13.9	10	27.6	0.86	-0.11	-0.12	-0.48	99.53	63.17
ACC	0.11	0.11	0.12	0.12	0.08	0.09	0.09	0.12	0.1	0.1	0.09	0.1	0.09		
%RK	30	25	45	45	40	95	45	25	20	30	20	65	80	35	35

BUYER ..... \$ .....

## 42 CASA TORO S169 (P)

DOB 13/10/2021  
ID S169  
UNREG  
POLLED  
RED SIMMENTAL

WGT 14/01/23	WGT 24/06/23	TEMPERAMENT
586	830	1

SIRE TNT ACCELERATOR S226  
CASA TORO RED LONE RANGER L14  
LRX CHEYENNE 14U

DAM CASA TORO PUREBRED COW

RAW DATA	DATE	WEIGHT	EMA
RIB		RUMP	IMF

BUYER ..... \$ .....

## 43 CASA TORO SHIMMER (P)

DOB 14/11/2021  
ID S163  
UNREG  
POLLED  
RED SIMMENTAL

WGT 14/01/23	WGT 24/06/23	TEMPERAMENT
495	682	1.5

SIRE TNT ACCELERATOR S226  
CASA TORO RED LONE RANGER L14  
LRX CHEYENNE 14U

DAM CASA TORO RED HEART H2  
CASA TORO Q159  
BILLA PARK K61

RAW DATA	DATE	WEIGHT	EMA
RIB		RUMP	IMF

BUYER ..... \$ .....

# 44 CASA TORO SIDEWALK (P)

DOB 6/12/2021  
ID S172  
UNREG POLLED  
RED SIMMENTAL

WGT 14/01/23	WGT 24/06/23	TEMPERAMENT
536	766	2

RAW DATA	DATE	WEIGHT	EMA
	RIB	RUMP	IMF

SIRE TNT ACCELERATOR S226  
CASA TORO RED LONE RANGER L14  
LRX CHEYENNE 14U

DAM WOONALLEE GOLDRUSH  
BILLA PARK P53

BUYER ..... \$ .....

# 45 CASA TORO SIMBRA (P)

DOB 8/10/2021  
ID S107  
UNREG POLLED  
RED SIMMENTAL

WGT 14/01/23	WGT 24/06/23	TEMPERAMENT
544	772	1.5

RAW DATA	DATE	WEIGHT	EMA
	RIB	RUMP	IMF

SIRE BILLA PARK HIGH IMPACT H186  
BILLA PARK NOTETAKER N141  
BILLA PARK POLL G207

DAM BILLA PARK 3/4 SIMBRAH COW

BUYER ..... \$ .....

	GROWTH								CARCASS					INDEX VALUES	
	CE	BW	WW	YW	MILK	MWWT	STAY	DOC	CW	REA	FAT	MARB	YG	API	TI
EPD															
ACC															
%RK															

# 46 CASA TORO SHADE (P)

DOB 3/5/2021  
ID S175  
UNREG POLLED  
BLACK SIMMENTAL

TEMPERAMENT
1

RAW DATA	DATE	WEIGHT	EMA
	RIB	RUMP	IMF

SIRE WOONALLEE HALF BACK  
LAVARTA PHENOMENON  
LAVARTA KEEPING FAITH

DAM DMP 3/4 SIMANGUS COW

BUYER ..... \$ .....

# 47 CASA TORO SYNGENTA (P)

DOB 10/11/2021  
ID S144  
UNREG POLLED  
BLACK SIMMENTAL



WGT 14/01/23	WGT 24/06/23	TEMPERAMENT
532	808	1.5

RAW DATA	DATE	WEIGHT	EMA
	RIB	RUMP	IMF

SIRE WOONALLEE HALF BACK  
LAVARTA PHENOMENON  
LAVARTA KEEPING FAITH

DAM WEBB TANK J0840  
CASA TORO 7/8 SIMMENTAL COW

We did discuss whether we needed to retain S144, but with a relatively small black program and his sire still going strong we decided to offer him to the industry. Hard to fault with huge potential, we think a fair bit of him.

	GROWTH								CARCASS					INDEX VALUES	
	CE	BW	WW	YW	MILK	MWWT	STAY	DOC	CW	REA	FAT	MARB	YG	API	TI
EPD															
ACC															
%RK															

BUYER ..... \$ .....

## 48 CASA TORO S141 (P)

DOB 28/11/2021  
ID YSC1S141  
REG POLLED  
BLACK SIMMENTAL



SIRE Woonallee Half Back  
**LAVARTA PHENOMENON**  
LAVARTA KEEPING FAITH

DAM Webb Tank J0840  
**CASA TORO KATARINA N33**  
CASA TORO KATARINA K6

WGT 14/01/23	WGT 24/06/23	TEMPERAMENT
460	768	1.5

RAW DATA	DATE	WEIGHT	EMA
	RIB	RUMP	IMF

	GROWTH								CARCASS					INDEX VALUES	
	CE	BW	WW	YW	MILK	MWWT	STAY	DOC	CW	REA	FAT	MARB	YG	API	TI
EPD	3.6	5.7	89.9	132.5	2.7	70.1	15.9	12.2	39.7	1.12	-0.097	-0.13	-0.47	104.67	72.88
ACC	0.11	0.12	0.11	0.11	0.07	0.08	0.09	0.11	0.11	0.1	0.1	0.1	0.09		
%RK	100	95	10	15	90	15	45	55	15	10	60	90	30	85	85

BUYER ..... \$ .....

## 49 CASA TORO SHOCK N SHAKE S137 (SC)

DOB 2/11/2021  
ID YSCPS137  
REG SCUR  
BLACK SIMMENTAL



SIRE Woonallee Half Back  
**LAVARTA PHENOMENON**  
LAVARTA KEEPING FAITH

DAM Molonglo Park Dolan  
**LAVARTA HERD ABOUT ME**  
CO-OP MISS LUCKY ONE B403

WGT 14/01/23	WGT 24/06/23	TEMPERAMENT
508	754	1

RAW DATA	DATE	WEIGHT	EMA
	RIB	RUMP	IMF

	GROWTH								CARCASS					INDEX VALUES	
	CE	BW	WW	YW	MILK	MWWT	STAY	DOC	CW	REA	FAT	MARB	YG	API	TI
EPD	5.1	5.1	70.8	104.2	3.5	56.5	14.8	11.2	21.6	0.87	-0.103	-0.03	-0.49	103.32	64.49
ACC	0.13	0.15	0.13	0.14	0.08	0.08	0.09	0.12	0.12	0.11	0.09	0.09	0.09		
%RK	95	90	75	80	80	75	60	70	80	45	75	75	25	90	90

BUYER ..... \$ .....

## 50 CASA TORO S140 (P)

DOB 2/12/2021  
ID S140  
UNREG POLLED  
BLACK SIMMENTAL

WGT 14/01/23	WGT 24/06/23	TEMPERAMENT
355	644	2.5

SIRE Woonallee Half Back  
**LAVARTA PHENOMENON**  
LAVARTA KEEPING FAITH

DAM Webb Tank J0840  
**CASA TORO 7/8 SIMMENTAL COW**

RAW DATA	DATE	WEIGHT	EMA
	RIB	RUMP	IMF

BUYER ..... \$ .....

# THANK YOU



Casa Toro would like to thank all purchasers and under-bidders for their support of the sale, and wish buyers all the best for their bulls and herds.

AVERAGE .....  
TOP PRICE .....  
CLEARANCE .....



# AUCTION TERMS

QUEENSLAND LIVESTOCK AGENTS ASSN LTD

## STANDARD STUD STOCK AUCTION TERMS AND CONDITIONS OF SALE

**IMPORTANT NOTICE** All bids shall be treated as offers made upon the following Terms and Conditions of Sale and all persons present are admitted to attend the sale on the basis that they have notice of these Terms and Conditions.

1. The highest bidder shall, subject to Condition 2, be the purchaser provided that the vendor reserves the right to bid either by himself or through his agent or auctioneer and should any dispute arise among the bidders for any lot, during or immediately after sale of the lot, it shall be settled at the auctioneers absolute discretion who may, should one of the disputants advance, put the lot or lots up again. The bidding from time to time shall be regulated by the auctioneer and no bid shall be retracted.
2. The sale will be conducted on a "Sale" or "No Sale" basis whereby the lot for sale shall be knocked down to the highest bidder, but the sale will be subject to the acceptance of the highest bid by the vendor who will immediately after the fall of the hammer declare "Sale" or "No Sale". Should the vendor reject the bid of the highest bidder such bidder will have the right of first refusal of the lot at the vendor's nominated price for one hour after the lot has been passed out of the ring on the Terms and Conditions herein set forth in so far as they shall apply.
3. The details of the purchaser, the purchase price and the lot sold as recorded by the sale clerk for and on behalf of the auctioneer shall be equally binding on both purchaser and vendor.
4. The auctioneer expressly reserves the right, without giving any reason therefore, to:-
  - (a) Refuse to acknowledge any bid;
  - (b) Withdraw any lot or lots before or during the sale;
  - (c) Exclude any person from the auction venue should it think fit.
5. Each lot in all cases shall be at the risk and expense of the purchaser, upon acceptance of his bid by the vendor or upon acceptance of the highest bidder's offer by the vendor whichever shall be the earlier.
6. Except as expressly provided in these Terms and Conditions of Sale no guarantee or warranty shall be given in respect of any lot sold under these Conditions as to pedigree, sex, age, breeding condition or otherwise howsoever, and no guarantee, warranty or condition whatsoever shall be implied from any affirmation made before or at the time of the sale, or from any circumstances of the sale, but in all cases where a guarantee is intended the same shall attach and be enforceable only if reduced to writing before

delivery of the lot and signed by the vendor or by the auctioneer acting as agent for the vendor, and the absence of such writing shall be conclusive evidence in case of dispute that no guarantee warranty or condition whatsoever was given or implied.

7. In the event of any dispute in respect to the sale of any lot:-
  - (i) The purchaser shall nevertheless be obliged to pay to the auctioneer the full purchase price and any other moneys or interest payable by the purchaser in accordance with these terms and conditions.
  - (ii) The vendor and the purchaser shall resolve the dispute between themselves;
  - (iii) The auctioneer shall have no liability or responsibility in regard to the dispute; and
  - (iv) No lot shall be returned to the auctioneer and the purchaser shall indemnify the auctioneer for all costs, expenses and damages which the auctioneer is put to or incurs by reason of the purchaser so doing.
8. The name of the vendor for whom the auctioneer acts is acknowledged to have been furnished to purchasers prior to sale and further particulars will in all cases be furnished to a purchaser if required. In the case of any dispute the remedy of the purchaser shall be against the vendor only and in no case or under any circumstances against the auctioneer who is to be regarded for all intents and purposes as agent for a disclosed principal.
9. (A) PAYMENT – Unless prior credit arrangements have been made in writing with the auctioneer the full purchase price for each lot shall be due and payable to the auctioneer in cash upon acceptance of the highest bid or the highest bidder's offer by the vendor and prior to delivery. Notwithstanding that delivery is given to or possession obtained by the purchaser or his representative prior to the payment of the purchase money in full the property in any lot which is sold shall not pass to the purchaser until the full purchase price and all cheques, promissory notes, bills of exchange, acceptance orders or drafts given in connection with such payment have been paid and liquidated, and until property shall pass, the purchaser shall hold such lot as bailee, provided that in all cases should such payment not have been made and liquidated within 14 days of the date of the sale the auctioneer reserves the right to:-
  - (i) Rescind the contract on behalf of the vendor and repossess and resell any lot;

- (ii) Recover from the purchaser interest upon the purchase price at a rate per annum which aggregates the 90 day Bill Rate plus two percentum. For the purposes of this condition "the 90 day Bill Rate" is the rate published regularly in the Australian Financial Review, expressed as a percentage per annum. If at any time the Financial Review ceases to publish a 90 day Bill Rate, the auctioneer shall determine and advise the purchaser of the interest rate to apply for the purpose of this condition.

(B) The auctioneer is selling as the del credere agent of the vendor and the full purchase price of any lot sold shall be payable by the purchaser to the auctioneer and be fully recoverable by the auctioneer in its own name.

10. If the purchaser shall neglect or fail to comply with any of the within conditions, any lot purchased by him may be immediately resold by public auction or private contract, with or without notice, at the risk of the former purchaser, who will be held responsible for all loss and expenses arising out of such resale, and shall not participate in any profit accruing therefrom.
11. Any vendor or purchaser removing the sale number from any lot after it has been sold will fully indemnify all affected parties for any loss, costs or damage should the lot be wrongly delivered.
12. The purchasers, if more than one, shall be jointly and severally bound by these Terms and Conditions, and shall jointly and severally carry out and perform same.
13. Any person who advances a bid on a lot shall do so on the expressed condition and understanding that should that person's bid be the highest bid and such bid is accepted by the vendor, then that person will be held personally liable for the price so agreed upon, regardless of the fact that that person may be acting on behalf of another party, either disclosed or undisclosed to the vendor or the auctioneer, provided however, that this Condition shall not in any way negate the vendor's right to claim against any principal and in such case the bidder's liability shall be construed to be by way of guarantee.
14. The auctioneer may, should it think fit, make arrangements on a purchaser's behalf for the feeding, watering, trucking, shipping of and general attendance to any lot after sale but no responsibility will be accepted by the auctioneer and all such service will be at the purchaser's risk and expense.
15. No lot will be delivered until the sales invoice has been checked and signed by the purchaser or his duly authorised representative.
16. (A) Each lot in all cases shall be sold with all faults, if any, and excepting those conditions and warranties implied by the Trade Practices Act or any applicable State legislation which cannot be contractually excluded and excepting conditions and warranties expressly contained in these Terms and Conditions of Sale, any express or implied condition, statement or

warranty, statutory or otherwise, is hereby excluded. The auctioneer is not liable in respect of any error, misdescription or omission in any particulars appearing or stated regarding the descriptions or pedigrees of any lot offered for sale and no such error, misdescription or omission shall entitle the purchaser to annul the sale or reject the lot or claim any compensation, damage or abatement in price.

(B) Each lot will be sold subject to passing all veterinary tests required by the law of the State or country to which the purchaser intends to transport that particular lot, such tests to be undertaken at the purchaser's expense and concluded immediately following the sale. In the event of a lot failing to pass these tests, the sale shall be null and void, any purchase moneys paid by the purchaser shall be refunded and property in the lot shall revert to or remain with the vendor.

### 17. GUARANTEES OF FERTILITY:

- 17.1 BULLS. Save and except for calves at foot, all bulls are guaranteed breeders and to so prove within six months of the date of sale or by reaching the age of 30 months whichever date shall be the later.
- 17.2 FEMALES. Save and except for female calves at foot, all females are guaranteed to be in calf or go into calf within six months of the date of sale or by the age of 30 months whichever date shall be the later. A positive pregnancy test certified by a qualified veterinary surgeon shall be sufficient evidence that the animal is in calf.
- 17.3 Claims under Clauses 17.1 and 17.2 guarantees of fertility shall be made to the vendor within six months from the date of sale or prior to the animal entering a quarantine area other than on the vendor's property.
  - 17.3.1 All claims must be accompanied by a veterinary certificate which shall clearly identify the basis of the claim.
  - 17.3.2 Infertility resulting from injury or disease occurring after the sale of the animal shall not be covered by this guarantee.
  - 17.3.3 The vendor retains the right to have the animal placed on a property nominated by him or returned to his own property for further assessment of fertility for a period not exceeding six months. In the event of the animal being proven fertile within the period, the costs incurred shall be borne by the purchaser. In the event of the animal not being proven fertile within the period the costs incurred shall be borne by the vendor.
- 17.4 LIABILITY OF A VENDOR. Except for costs defined elsewhere in the conditions of sale, the liability of a vendor in respect of claims relating to fertility shall not exceed the purchase price of the animal(s) or to provide mutually agreed upon replacement animals.

17.5 REFUNDS. In the event of a claim being substantiated and the purchase price being refunded, the animal/s shall automatically become the property of the vendor and be returned to him or disposed of according to his instructions at his expense.

17.6 This guarantee shall be voided by the purchaser if:  
(a) The animal is returned to the vendor -  
(i) in poor physical condition or with any injury;  
(ii) tests carried out on behalf of the vendor within fourteen days of such return proved positive to any diseases which may affect the animals fertility or ability to breed naturally; or  
(b) the purchaser has collected and stored semen from a bull or embryos from a female.

17.7 In the event of a dispute as to whether a lot is a breeder, such dispute shall be resolved by the vendor and the purchaser and the auctioneer, while he will use his best endeavours to assist, shall have no liability or responsibility in that regard. In the event that a lot is alleged or proved not to be a breeder, the purchaser shall nevertheless be obliged to pay the auctioneer the full purchase price and any other monies or interest payable by the purchaser in accordance with these Terms and Conditions.

18 (A) Each lot shall be at the risk of the vendor in respect of any damage or injury, whether by disease, accident or otherwise, for the period that the lot be in the custody of the auctioneer, PROVIDED THAT the auctioneer, its servants, agents and employees shall use all reasonable care to protect and control the lot while it is in the auctioneer's custody AND PROVIDED THAT when a lot has been sold, it shall be at the risk of the purchaser in all respects.

(B) If any vendor brings to the sale premises any lot which is dangerous, or infected with any disease, that vendor shall be liable for all injury, damages, costs, losses, or expenses which the auctioneer may sustain, incur or be put to either directly or indirectly as a result of the vendor so doing. The auctioneer reserves the right, at its absolute discretion, to exclude from the sale, or put out of the sale venue or dispose of, any lot which in its opinion shows signs of any disease, whether infectious, contagious or not, or of any serious fault or of being dangerous.

19. DELIVERY – Except at the discretion of the auctioneer no lot shall be delivered to the purchaser unless payment of the purchase money together with any additional charges incurred including those expenses incurred by the auctioneer pursuant to Condition 14 hereof, is first made by the purchaser to the auctioneer. Release of lots may be withheld by the auctioneer until personal cheques are cleared.

20. In these Conditions:
- (a) References to "Auctioneer" shall be taken to mean as the context so admits, the selling agent or any member, subsidiary or related corporation or body, officer, agent or employee thereof, authorised by the vendor to conduct the sale of the lot;
  - (b) "Purchaser" shall have the meaning ascribed to it in Condition 1;
  - (c) "Vendor" shall mean the person or corporation upon whose account lots are offered for sale and where a stud or farm is named shall mean the proprietor of that stud or farm;
  - (d) "Lot" shall be taken to mean the animal offered for sale and/or sold by the auctioneer on behalf of a vendor.

**IMPORTANT NOTICE:** The selling agent, its members, subsidiary or related corporations, officers, agents, and employees for themselves and for those for whom they act while exercising due care provide all information without responsibility and give no guarantee whatsoever as to its accuracy.

All persons who attend the sale do so entirely at their risk and the selling agent, its members, subsidiary or related corporations, officers, agents, employees and its principals, for themselves and for those for whom they act, do not assume or accept any responsibility or liability of whatever nature for any injury or damage whatsoever which may occur.

The hammer price is exclusive of GST but GST will be applied to the final hammer price and included on the invoice.

## BUYER'S INSTRUCTION SLIP

### BUYERS DETAILS

Bid Card Number .....

Name .....

Address .....

Postcode .....

Phone .....

Email .....

Account to (Agent) .....

### PURCHASE DETAILS

Total lots purchased .....

Lot numbers purchased .....

Destination address (for permit) .....

Destination PIC .....

Name of carrier .....

Date stock leaving yards .....

Dipping  No  Yes: Number of head .....

Do you require the transfer of registration certificates?  No  Yes

Name to transfer certificates to .....

Do you require insurance?  No  Yes: Period: .....

**If going to clean country or across the Queensland border please answer:**

Clearing permit (if required)  No  Yes

Tick line crossing .....

Border crossing (if required) .....

Final destination .....

Signature .....

Date .....



**LOT 4** CASA TORO STAKEHOLDER S103 (P) SIMM.



**LOT 16** CASA TORO TOP CUT T23 SIMMENTAL



**LOT 39** CASA TORO TOOBEAH T5 (P) SIMMENTAL





**LOT 1** CASA TORO SIGN MAKER S48 (P) SIMMENTAL



**LOT 15** CASA TORO TIN TIN T16 SIMMENTAL



**LOT 47** CASA TORO SYNGENTA (P) BLACK SIMMENTAL